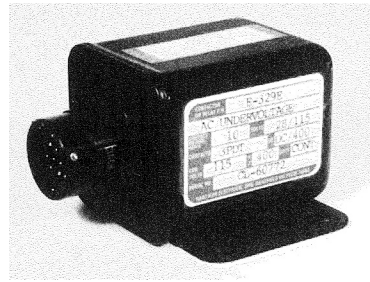


E-329 Series Relay, Voltage Sensing

Product Facts

- 3PDT
- Solder sealed cover, hermetically sealed contacts
- Meets many requirements of MIL-PRF-6106



Performance Data

Electrical Characteristics

Contact Arrangement — 3PDT

Rated Operating Voltage — 28 Vdc, and 155 Vac 400 Hz

Resistive Rating — 10 Amps

Inductive Rating — 8 Amps

Motor Rating — 4 Amps

Lamp Rating — 2 Amps

Pickup Time, Max. — 70 msec

Contact Bounce, Max. — 3 msec

Dropout Time Delay —

200-400 msec when the relay is in the energized position and the voltage drops below 104 ± 2 Vrms and above 88 ± 4 Vrms. The relay will remain energized for 200-400 msec before deenergizing. When the voltage drops below 88 ± 4 Vrms no time delay is required. When the voltage drops to 30 volts or less the relay will de-energize 50 msec max.

Operating Voltage, Nom. — 115 VAC, RMS L-N

Operating Voltage, Max. — 122 VAC, RMS L-N

Operating Frequency — 400 ± 20 Hz

Pickup Voltage — 109 ± 2 Vrms

Dropout Voltage — 104 ± 2 Vrms

Operating Current, Max. @ 25°C — 100 milliamp

General Characteristics

Temperature Range — -55°C to $+85^{\circ}\text{C}$

Operating Cycles (Life) at Rated Resistive Load, Min. — 100,000 cycles

Operating Cycles (Life) Mechanical, Min. — 100,000 cycles

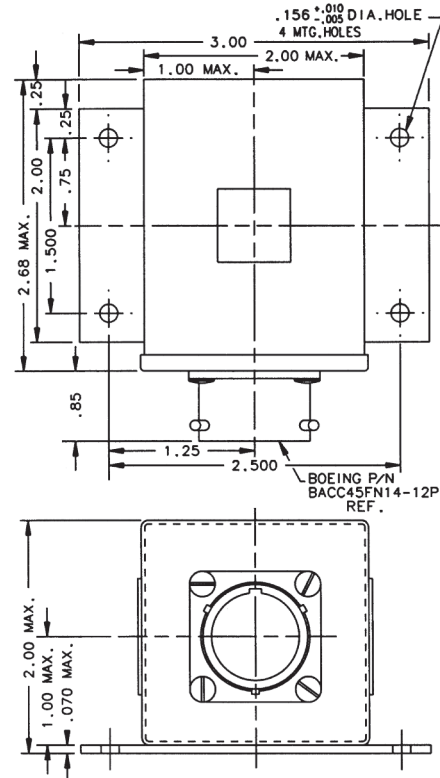
Dielectric Withstanding Voltage — 1,000 Vrms, 60 Hz

Insulation Resistance @ 500 Vdc — 1,000 megohm min.

Altitude — 0-80,000 ft

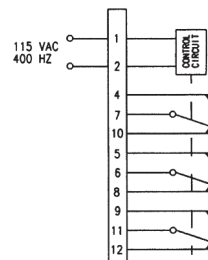
Weight, Max. — 10 oz

Shock for 11 msec, 1/2 Sine, 3 Axis — 30 G



Mounting Style A

Circuit Configurations (Consult factory for other available circuit configurations)



Circuit Configuration 1

For factory-direct application assistance, phone 419-521-9500 or fax 419-526-2749.

HARTMAN Part Number	Construction Type	Mounting Style	Duty Cycle	Circuit Config.	TE Part Number
E-329E	Hermetically Sealed	A	Continuous	1	1-1616126-9